

POWTEQ®



Knife Mill Auto-HM600

◇ Knife Mill Auto-HM600

Knife Mill Auto-HM600 is an ideal mill specially designed for grinding and homogenizing of food samples. HM600 increases grinding efficiency and reduces artificial error which guarantees grinding accuracy. It pulverizes samples into analytic fineness in a few seconds with high level of homogenization. The whole grinding and knives cleaning process are performed automatically, and it improves sample pretreatment efficiency and could meet varies professional requests of laboratory analysis.

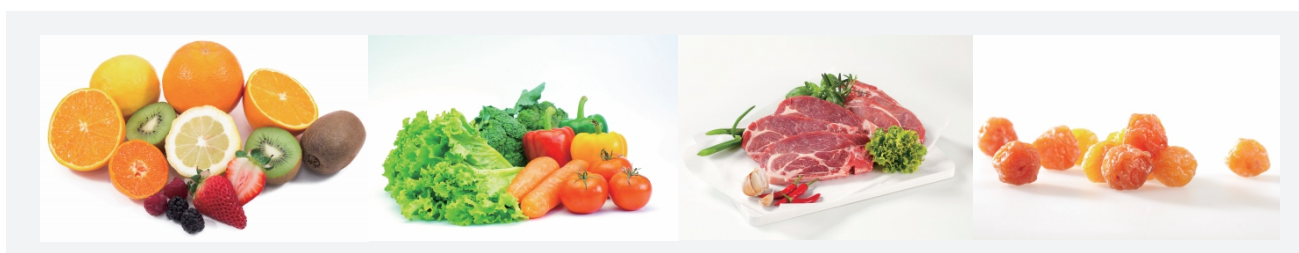


○ Working Principle

HM600 equipped with 2 double-blades knives. The knives placed in the bottom center of grinding jar are driven separately by two 750W motors. There are 6 sample stations and two samples can be processed at one time. Knives rise and fall automatically to ensure quick grinding and homogenizing. Ultrasonic and solvent cleaning, drying ensure knife clean after test. Dull side of the blades can be used for pre-grinding of big scale samples while sharp side for fine-grinding.

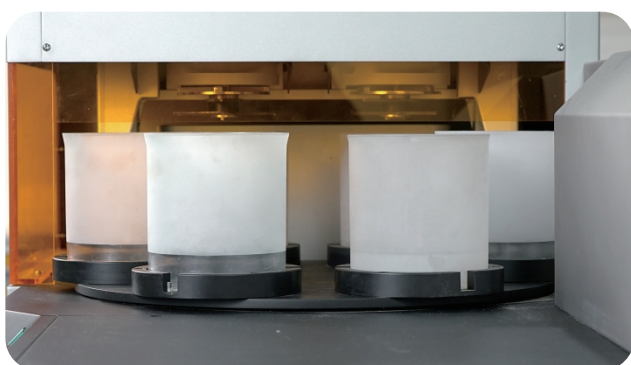
○ Application

HM600 is not only ideal for soft, mid-hard, brittle and fibrous samples fine crushing but also suited for milling and homogenizing of watery, oily, fatty samples. It could process large amount of samples such as cereals, fruit, vegetable, livestock, aquatic product, feeds, meat, sausages, fish, haslet, herbs etc.



○ Features and advantages

- Dual motors, powerful and speed adjustable
- One-stop to do pre and fine grinding
- Easy operation, quick start
- Stainless steel and PC material grinding sets optional
- Accessories can be high temperature sterilized
- Heavy metal contamination free accessories optional
- Interval, forward and reverse modes can be easily set on control panel



○ Technical Data

Auto-HM600	
Channel qty	2
Speed	2000-10000rpm
Handling capacity	6 samples/batch, 24 samples/hr
Grinding jar capacity	1L
Display screen	LED screen, detachable and can be remote controlled via APP
Control system	microcomputer control of whole process of samples grinding and knives cleaning
Notify message	showing working process and rest time by steps, notify error info.
Cleaning modes	ultrasonic, detergent
Cleaning target	knife, knife carrier, press lid cleaning simultaneously
Grinding pattern	knife moving up and down when grinding to enforce grinding performance
Press lid	When grinding the lid will press down to reduce sample residue on jar wall
Quick Launch Button	1 or 2 tunnels working patterns; sample qty.; knife auto-cleaning modes; cycles times; tunnels cleaning
Protection function	The ultrasonic cleaning will not be motivated but warning when there is no water inside
Peristaltic pump	external peristaltic pump head with qualified pump pipe
Motor power	750W per motor, dual motors